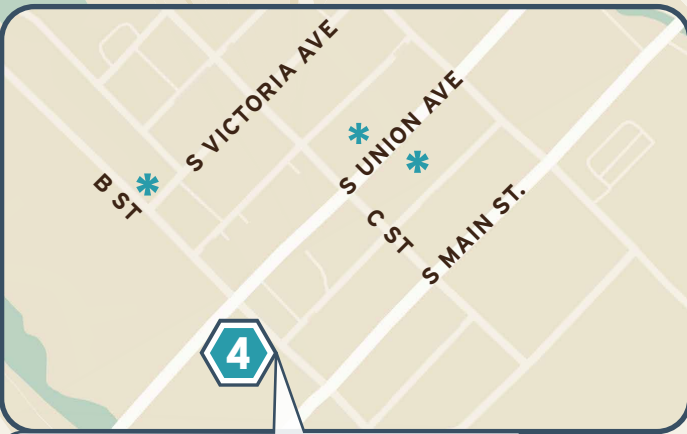


# Van Gogh VAN

5-8 PM

## FREE FIRST FRIDAY SHUTTLE BUS


- 1** **SANGRE de CRISTO ARTS & CONFERENCE CENTER**  
210 N. Santa Fe Ave. | Arts Center round-about loading zone for pick-up and drop-off.
- 2** **PUEBLO ART GUILD GALLERY**  
1500 N. Santa Fe (Mineral Palace Park)  
Enjoy the gallery and the park at the same time!
- 3** **PUEBLO ARTS ALLIANCE**  
W. City Center and S. Grand Avenue  
**Liminal Space Gallery | Crystal Moon Witchery**  
Art galleries & handmade items; also walking distance to the Historic Arkansas Riverwalk!
- 4** **FUEL & IRON FOOD HALL**  
Southeast corner of B Street and Union Avenue  
**Loading Dock Gallery | Radeaux Art Gallery | Steel City Art Works | Pueblo Heritage Museum**  
All four galleries within easy walking distance, inside the Fuel and Iron, north on Union Avenue and west on B Street.  
**HERITAGE MUSEUM NOT PARTICIPATING IN JANUARY**
- 5** **THE ETHOS**  
615 E. Mesa Ave. | We are a community space full of artists, creatives, and makers who come together to collaborate, create, and inspire.
- 6** **BLO BACK GALLERY**  
131 Spring St. | Blo Back Gallery also has live music performances. See you there!



**FUEL & IRON FOOD HALL**  
Southeast corner of B st. & Union Ave.  
\* Loading Dock Gallery  
400 S. Union  
North room at Fuel & Iron 5-8PM;  
8-10PM Afterglow performance  
\* Radeaux Art Gallery  
221 S. Union  
Left (west) side of Union.  
\* Steel City Art Works  
216 S. Union  
Right across the street from Radeaux Art Gallery  
\* Pueblo Heritage Museum  
201 W. B St. **NOT PARTICIPATING IN JANUARY**  
On the corner of Victoria and B st.




## First Friday Venues

**Sangre de Cristo Arts Center**  is a one-of-a-kind, educational, inspirational, and inclusive southern Colorado arts destination with five exhibit galleries, an award-winning children's museum, a school of dance, a school of arts, and ample space for meetings, performances, and events.


**210 N. Sante Fe**, 4-6 pm on First Friday

**The Pueblo Art Guild**  in Mineral Palace Park hosts art shows with local artists throughout the year. **1500 N. Sante Fe**, 5-8 pm First Friday


**Art Alliance's**  **Liminal Space Gallery** features curated shows in its front atrium, while renting wall space for local artists to show their work in the anterior room. **107 S. Grand**, 5-7 pm Winter; 5-8 pm summer

**Crystal Moon Witchery**  Crystal Moon's goal is to help you find magic or learn to use a little more magician your everyday life. **410 W City Center Dr.**, 5-7 pm


**Loading Dock Gallery**  in the front room of the Fuel & Iron Food Hall is curated by the Creative Consortium. New exhibits every 1<sup>st</sup> Friday from 5-8 pm. **400 S. Union**

**Steel City Art Works Gallery**  is a Cooperative of local artists with a diverse selection of art forms. We have new artwork every month and refreshments are served every First Friday, 5-8 pm. **216 S. Union**

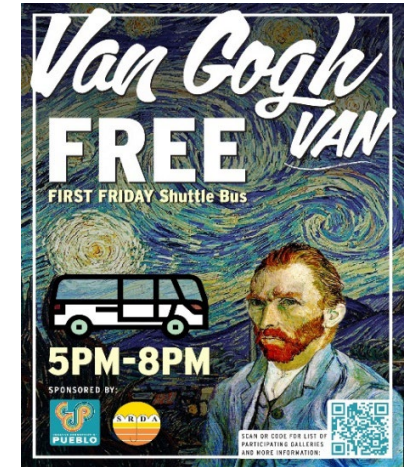
**John Deaux Gallery**  noted in *Artscape* Magazine as one of "Colorado's top art spaces." Be sure to check out 1<sup>st</sup> and 2<sup>nd</sup> floor galleries and their First Friday live entertainment. 5-9 pm. **221 S. Union**

**Pueblo Heritage Museum**  seeks to Interpret, preserve, and promote the heritage of Pueblo and provide visitors with a greater understanding of ourselves, our community, and our role in shaping the future. Monthly exhibits of local artists. **201. W. 8<sup>th</sup>**, 5-8 pm

**The Ethos**  The Ethos houses creative workshops, sober bar, classroom, commercial kitchen, and meeting space for rent. They are community-centered, radically-inclusive and locally-invested and have created a community space full of artists, creatives, and makers who come together to collaborate, create, and inspire. **615 E. Mesa**, 7-9 pm

**Blo Back Gallery**  provides an uncensored platform that may challenge what you believe to be true. From 6-8 pm at **131 Spring St.**

Use this QR code to ensure you have the most up-to-date map and Van Gogh Van schedule.



The **Creative Consortium**, **SRDA**, and **Visit Pueblo** are proud to announce that Pueblo's **FREE Van Gogh Van will continue in 2024**. The **Van** transports 1<sup>st</sup> Friday Art Walk participants from art venue to art venue. The **Van** makes 3 rounds between 5 pm and 8 pm. The first 2 cycles offer 10-15 minutes at the smaller venues and 43 to 69 minutes at multiple venue van stops and larger galleries. The 3<sup>rd</sup> cycle is a final pick-up to ensure everyone can get back to their starting point. Park your car or lock up your bike and get a ride! Take time for dinner at one of our wonderful restaurants. Or just snack your way from venue to venue.

### Get these dates on your calendar:

- January 5, 2024
- February 2, 2024
- March 2, 2024
- April 6, 2024
- May 4, 2024
- June 1, 2024
- July 6, 2024
- August 3, 2024
- September 7, 2024
- October 5, 2024
- November 2, 2024
- December 7, 2024

# Van Gogh Van 1<sup>st</sup> Friday Van Schedule



The Van Gogh Van starts at 5 pm at the Sangre de Cristo Arts Center (SDC). SDC's First Friday celebration is from 4-6 pm, and the Van will not return to SDC until 6:13 pm. So visit the Arts Center before the Van Gogh Van starts its route at 5pm! Don't miss their art or their festivities!

Though the Van begins and ends at SDC, you can get on at any van stop. But if you want to visit every venue, the Van will do the trick.

The following times are our best estimate. To be on the safe side, you may want to get to your van-stop a few minutes early. Look for the Van Gogh Van stop signs and balloons for exact locations of the van stops. Follow the sidewalk chalk signs to find all Union and Victoria galleries. Listen for 3 honks upon Van arrival and 2 minutes before departure. The Van will be at each van stop for a minimum of 3 minutes per stop. Your Tour Guide will highlight the special offerings of each gallery and how much time you have at each stop.

*Come join us to celebrate the arts and the rich, diverse history and culture of Pueblo! Enjoy!*

## LEGEND for Van Schedule on to the left

\*SDC = Sangre de Cristo Arts Center

\*\*Fuel & Iron Stop:

- Loading Dock-front room of Fuel & Iron
- Steel City Art Works at 216 S. Union
- John Deaux-across street at 221 S. Union
- Heritage Museum at 201 W. B St.

## Van Schedule

Stop		Cycle 1	Cycle 2	Cycle 3
<b>1</b>	<b>Location:</b> <b>SDC *</b>	<b>Arrive 5:00 pm</b>	<b>Arrive 6:13</b>	<b>Arrive 7:14</b>
	210 N. Sante Fe	<b>Leave 5:00</b>	<b>Leave 6:16</b>	<b>Leave 7:17</b>
	Transit Time to	3 min	3 min	3 min
<b>2</b>	<b>Art Guild</b>	<b>Arrive 5:03</b>	<b>Arrive 6:19</b>	<b>Arrive 7:20</b>
	1500 N Sante Fe	<b>Leave 5: 18 (15min)</b>	<b>Leave 6:29 (10m)</b>	<b>Leave 7:23</b>
	Transit Time to	6 min	6 min	6 min
<b>3</b>	<b>Arts Alliance</b>	<b>Arrive 5:24</b>	<b>Arrive 6:35</b>	<b>Arrive 7:29</b>
	107 S Grand	<b>Leave 5:39 (15min)</b>	<b>Leave 6:45 (10m)</b>	<b>Leave 7:32</b>
	Transit Time to	2 min	2 min	2 min
<b>4</b>	<b>Fuel &amp; Iron**</b>	<b>Arrive 5:41</b>	<b>Arrive 6:47</b>	<b>Arrive 7:34</b>
	400 S. Union	<b>Leaves 5:44 (3min);</b> <b>returns 6:47, leaves at</b> <b>6:50 (1h 9m)</b>	<b>Leave 6:50 (3min);</b> <b>returns 7:34 and</b> <b>leaves at 7:37 (48m)</b>	<b>Leave 7:37</b>
	Transit Time to	5 min	5 min	5 min
<b>5</b>	<b>The Ethos</b>	<b>Arrives 5:49</b>	<b>Arrives 6:55 (10m)</b>	<b>Arrives 7:42</b>
	615 E. Mesa	<b>Leaves 6:04 (15 min)</b>	<b>Leaves 7:05</b>	<b>Leaves 7:45</b>
	Transit Time to	4 min	4 min	4 min
<b>6</b>	<b>Blo Back</b>	<b>Arrive 6:08</b>	<b>Arrive 7:09</b>	<b>Arrive 7:49</b>
	131 Spring St.	<b>Leaves 6:11 (3 min);</b> <b>returns at 7:09, leaves</b> <b>at 7:12 (61 min)</b>	<b>Leave 7:12 (3 min);</b> <b>returns at 7:49,</b> <b>leaves at 7:52 (43m)</b>	<b>Leave 7:52</b>
	Transit Time to	2 min	2 min	2 min
<b>1</b>	<b>SDC* 210 N.</b> <b>Sante Fe</b>	<b>Arrive 6:13</b>	<b>Arrive 7:14</b>	<b>Arrive 7:54</b>
	<b>Route time</b>	1 hour 13 minutes	61 min	40 min